



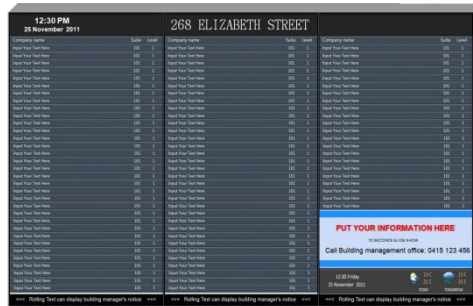
Digital Directory board



Digital Directory Board Standalone or Web based



Wall mount
PF-H4 Model



Wall mount Multi screen wall
Narrow bezel PD Model



Floor standing
L-H2 Model



Floor standing
L-H4 Model



Floor standing
Custom made

Feature:

- ❖ Slim and modern appearance
- ❖ Various size 22",32",42",46",55",65", 70", Multi Screen
- ❖ Wall mount and floor standing style, custom made enclosure available
- ❖ Inbuilt Media player, Power on and play
- ❖ Industrial metal case with vandal proof tempering glass frame
- ❖ No button and switch can interrupt directory board working
- ❖ Commercial grade can working 24/7
- ❖ Auto timer On/Off control save energy
- ❖ USB disk automatic upload directory content (Standalone Model)
- ❖ Or Internet remote manage directory content (Web based system)
- ❖ Scrolling text at bottom of screen can display building manager notice
- ❖ Can present information according to scheduled Date/Time
- ❖ Friendly software let you change tenant information in munities with no IT/graphic design skill needed
- ❖ Directory template provide
- ❖ On going support provide

Web based Digital Directory Board Internet manage content – Use in Network environment

Sample Template



Emergency override message

Extra slides information

Date/Time

Manager contact

52 Phillip Street			
DONALD W. DE BOER		LEVEL 14	
GOVERNOR PHILLIP CHAMBERS		ENQUIRE / DELIVERIES TO L14 RECEPTION. LEVEL 12	
A.I.H.I. Pty Ltd.	David Brough	ICOM 4 Pty Ltd	True Colours Pty Ltd
Board Room Partners Pty Ltd.	Flagstaff Wild Pty Ltd	International Pacific Capital Pty Ltd	
Broken Hill Prospecting Ltd	Geoff Hill	So Co Ltd	
Bill Wild.	Hill Sherlock Willis & Partners	The Leaders Group Ltd	
		LEVEL 11	
CHANCELLOR HATTERSLEY LLOYD PTY LTD		LEVEL 10	
Foundation for National Parks & Wildlife	The Thalidomide Foundation Limited	What'sOn Consulting Pty Ltd	
Symphony of Australia Pty Ltd	Vision Pty Ltd	Zip Industries (Aust) Pty Ltd	
INSTITUTE OF ARBITRATORS & MEDIATORS		LEVEL 9	
Dispute Resolution Centre (DRC)			
THE ROYAL AUSTRALASIAN COLLEGE OF PHYSICIANS			
Education Centre & Reception		LEVEL 8	
Fellowship Relations		LEVEL 7	
Continuing Professional Development		LEVEL 6	
LEIGHTON CONTRACTORS		LEVEL 5	
TEXEL		LEVEL 4	
THE VENTURE GROUP		LEVEL 2	
AFG Venture Group		John Tarrant & Partners	

Building name

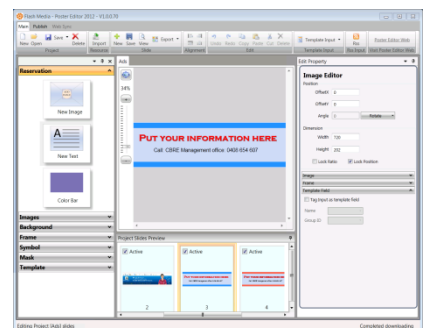
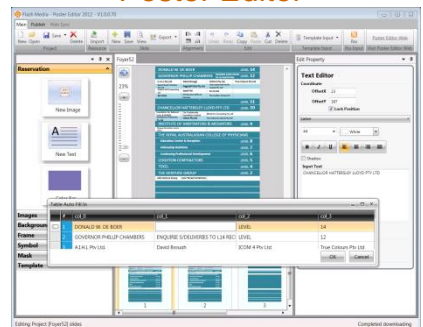
Tenant details

Scrolling Text
Weather Info

Feature:

- ❖ Friendly software let you change tenant information in munities without IT/graphic design skill needed
- ❖ Remote content management, through Internet you can changing your building sign anywhere in the world
- ❖ Rich Information format, have Weather, Instant Scrolling text, also can have News, Stock and exchange info even more
- ❖ Multi display window, slides show can present tenant profile/Events notice/Building notice/Season's greeting
- ❖ You can authorize slide time slot to you tenant, they can change slides content and publish by themselves
- ❖ What you see in editing software what you get on display
- ❖ Change background theme by drag and drop
- ❖ Using your fonts /color/size
- ❖ Simply type in the text and click "Publish", Scrolling text will be displayed at the position of screen you preset
- ❖ Can present information according to scheduled Date/Time
- ❖ **Emergency override information available**
- ❖ Directory template provide
- ❖ On going support provide

Poster Editor



H4 Specification



Model	FMPF32H4	FMPF42H4	FMPF46H4	FMPF55H4
Display Screen Size	32"	42"	46"	55"
Resolution	1366x768			1920x1080
Product Size (mm)	814(H)x504(V)x65.7(D)	1046(H)x639(V)x66.4(D)	1149(H)x702(V)x64.7(D)	1330(H)x802(V)x70(D)
Display Size (mm)	699(H)x394(V)	932(H)x525(V)	1019(H)x574(V)	1209.6(H)x680.4(V)
Brightness	450 cd/m ²		500 cd/m ²	
Viewing Angle	178°			
Aspect Ratio	16:9			
Contrast Ratio	3000:1 typ	4000:1 typ		5000:1 typ
Input Power Voltage	AC 110-240 V (50Hz-60Hz)			
Power Consumption	100W	180W	240W	280W
Working Temperature	0°C to 50°C			
Program Input Port	USB 2.0 auto import			
Content upload	USB Flash Drive			
Build In Flash Memory	4GB			
AV Signal Input Port	VGA,HDMI, Audio (3.5mm)			
Supported Media Format By Built In Decoding	Video: All formats (1080P Full HD) Picture: JPG, GIF, BMP, PNG Audio: All formats			
Timer On/Off	Support (Set by daily or weekly)			
Rolling Text	Support (Work with ADP 2 software)			
Split Screen				
Program Encrypt				
Schedul Editor	Schedule Editor is a powerful PC end playlist editing software, sync eth edited content with LCD digital signage via USB Disk to achieve different functions			
Play Log	Support			
Internet Control (optional)	Web Based system LAN, WIFI (Optional), 3G (Optional)			
CDMS/Media Studio	Web based (Optional)			
Sound	5W, 8Ω			
Wall Mount Size (both horizontal and vertical)	400x200 (VESA)	400x400 (VESA)	580x400(VESA)	580x400(VESA)
Accessories	Remote Control, Wall Mount Plate			

H2 Specification



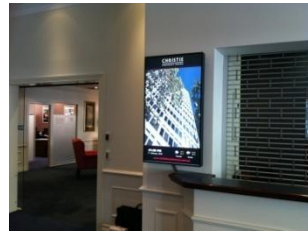
Model (One side screen)	FML46H2	FML55H2	FML65H2	FML70H2
Display Screen Size	46"	55"	65"	70"
Resolution	1920x1080			
Product Size (mm)	705(H)x1699(V)x128(D)	830(H)x2000(V)x128(D)	1030(H)x2000(V)x145(D)	1040(H)x2100(V)x145(D)
Display Size (mm)	562.54(H)x1008.35(V)	680(H)x1210(V)	809.52(H)x1434.48(V)	875(H)x1554(V)
Brightness	450 cd/m ² max	500 cd/m ² max	550 cd/m ² max	450 cd/m ² max
Contrast Ratio	4000:1 typ	6000:1 typ	5000:1 typ	1500:1 typ
Input Power Voltage	AC 110-240 V (50Hz-60Hz)			
Working Temperature	0°C to 50°C			
Sound	5W, 8Ω			
Colors	16.7M			
Program Input Port	USB 2.0 auto import			
Content upload	USB Flash Drive			
Build In Flash Memory	4GB			
AV Signal Input Port	VGA,HDMI, Audio (3.5mm)			
Power Consumption	390W	490W	900W	950W
Viewing Angle	178°			
Supported Media Format By Build In Decoding	Video: All formats (1080P Full HD) Picture: JPG, GIF, BMP, PNG Audio: All formats			
Timer On/Off	Support (Set by daily or weekly)			
Rolling Text	Support (Work with ADP 2 software)			
Split Screen				
Program Encrypt				
Schedule Editor	Schedule Editor is a powerful PC end playlist editing software, sync eth edited content with LCD digital signage via USB Disk to achieve different functions			
Play Log	Support			
Internet Control(Optional)	Web Based system LAN, WIFI (Optional), 3G (Optional)			
CDMS/Media Studio	Web based (Optional)			
Package Size (mm)	1880x900x650	2100x1000x635	2250x1250x550	2250x1300x600
Net Weight	105kg/pcs	120kg/pcs	170kg/pcs	190kg/pcs
Gross Weight	111kg/pcs	125kg/pcs	210kg/pcs	230kg/pcs
Accessories	Remote Control, Key			

H4 Specification



Model (One side screen)	FML46H4	FML55H4	FML65H4	FML70H4
Display Screen Size	46"	55"	65"	70"
Resolution	1920x1080			
Product Size (mm)	770(H)x1700(V)x80(D)	880(H)x1950(V)x80(D)	1040(H)x2359(V)x140(D)	1050(H)x2500(V)x140(D)
Display Size (mm)	562.54(H)x1008.35(V)	680(H)x1210(V)	809.52(H)x1434.48(V)	875(H)x1554(V)
Brightness	450 cd/m ² max	500 cd/m ² max	550 cd/m ² max	450 cd/m ² max
Aspect Ratio				
Contrast Ratio	4000:1 typ	6000:1 typ	5000:1 typ	1500:1 typ
Input Power Voltage	AC 110-240 V (50Hz-60Hz)			
Working Temperature	0°C to 50°C			
Sound	5W, 8Ω			
Colors	16.7M			
Program Input Port	USB 2.0 auto import			
Content upload	USB Flash Drive			
Build In Flash Memory	4GB			
AV Signal Input Port	VGA,HDMI, Audio (3.5mm)			
Power Consumption	390W	490W	900W	950W
Viewing Angle	178°			
Supported Media Format By Build In Decoding	Video: All formats (1080P Full HD) Picture: JPG, GIF, BMP, PNG Audio: All formats			
Timer On/Off	Support (Set by daily or weekly)			
Rolling Text				
Split Screen	Support (Work with ADP 2 software)			
Program Encrypt				
Schedul Editor	Schedule Editor is a powerful PC end playlist editing software, sync eth edited content with LCD digital signage via USB Disk to achieve different functions			
Play Log	Support			
Internet Control	Web Based system		LAN, WIFI (Optional), 3G (Optional)	
CDMS/Media Studio	Web based (Optional)			
Net Weight	105kg/pcs	120kg/pcs	170kg/pcs	190kg/pcs
Gross Weight	111kg/pcs	125kg/pcs	210kg/pcs	230kg/pcs
Accessories	Remote Control, Key			

Solutions



Contact us for site survey and quotation

Flash Media Holding Pty Ltd
Suite 21, 287 Victoria Road
Rydalmere
NSW 2116

Contact: Mr. Gang Zhuo
T. 02 9680 0758
M. 0412883168
E. gang@flashmedia.net.au
W. www.flashmedia.net.au